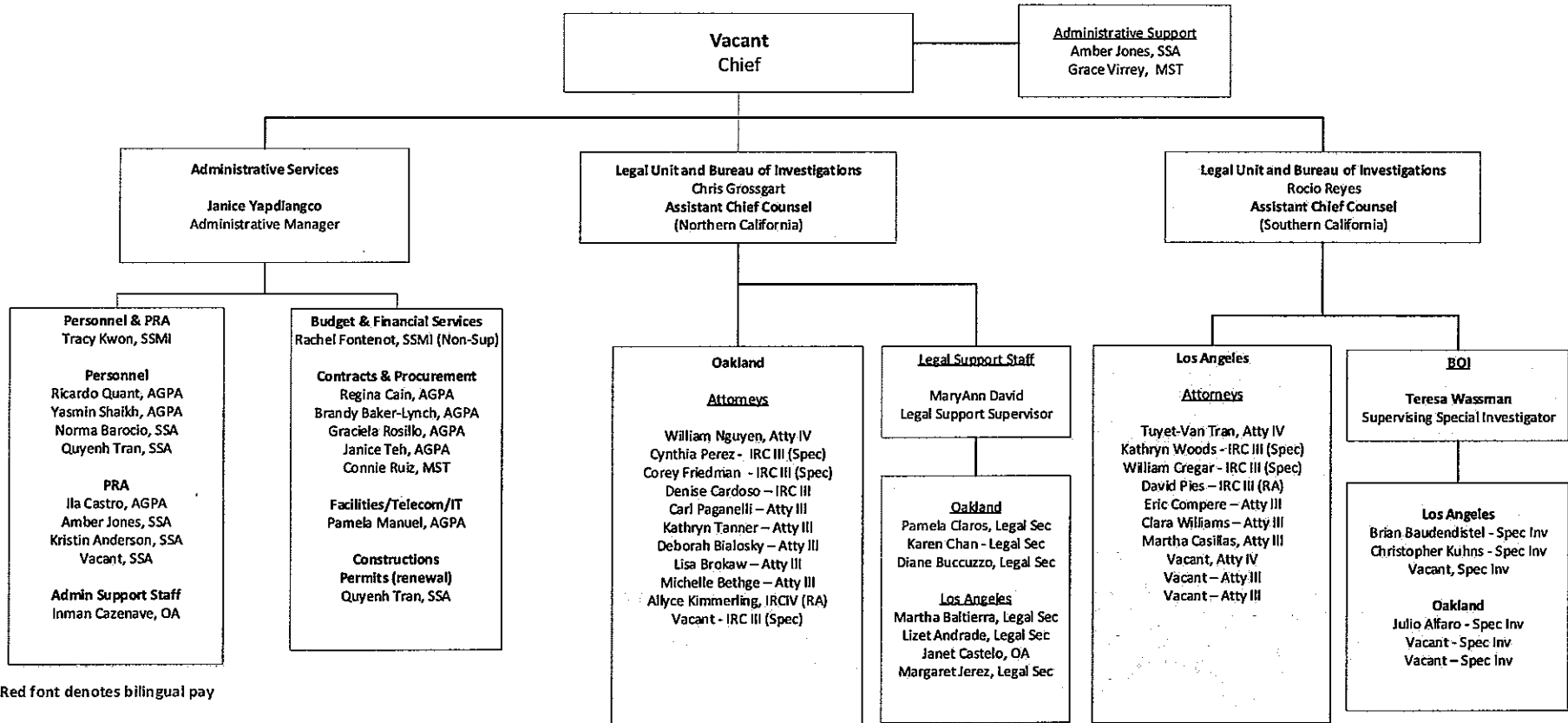
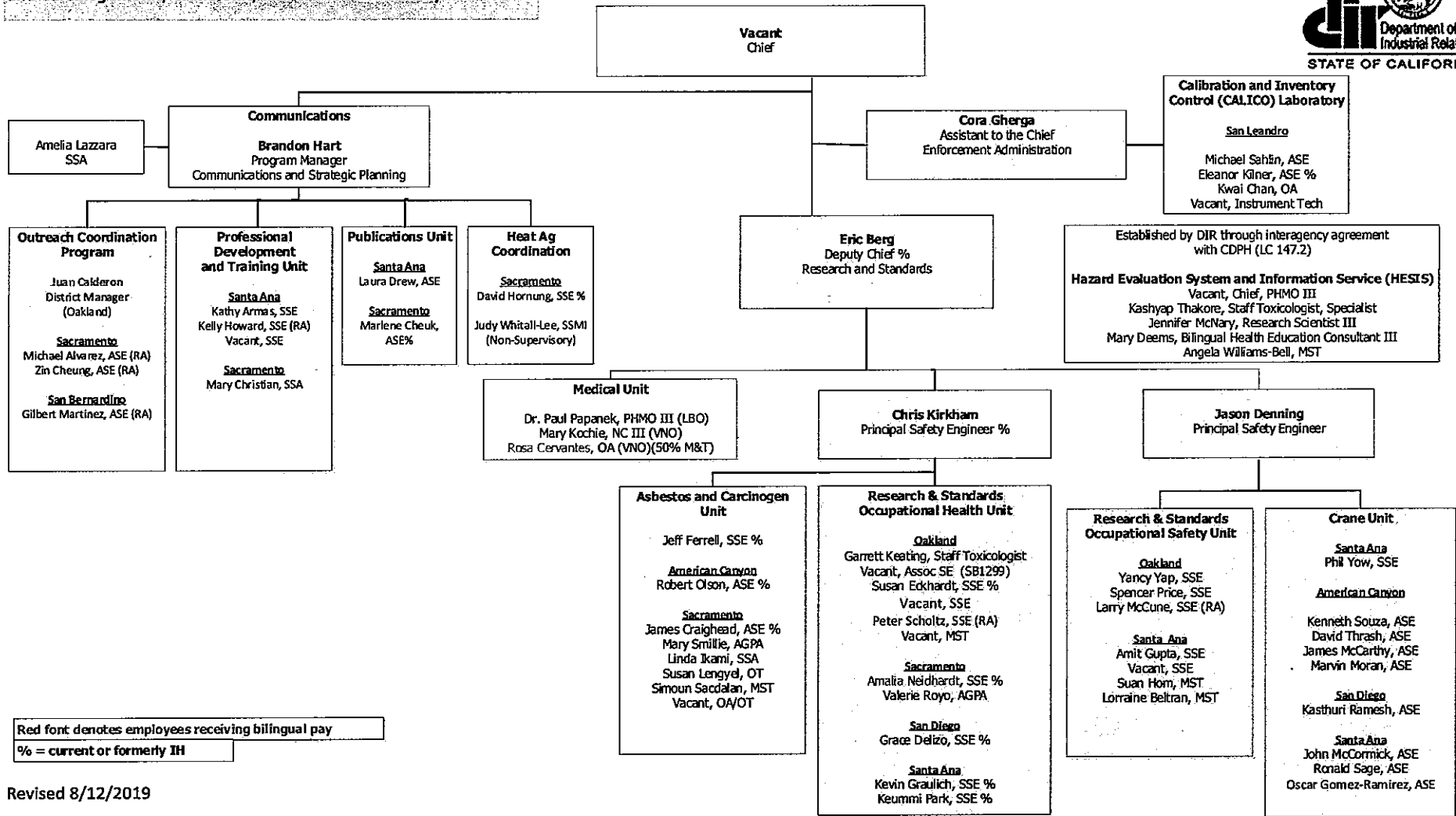


**DIVISION OF OCCUPATIONAL SAFETY AND HEALTH
ADMINISTRATIVE SERVICES, LEGAL UNIT, AND BUREAU OF INVESTIGATIONS**



Red font denotes bilingual pay

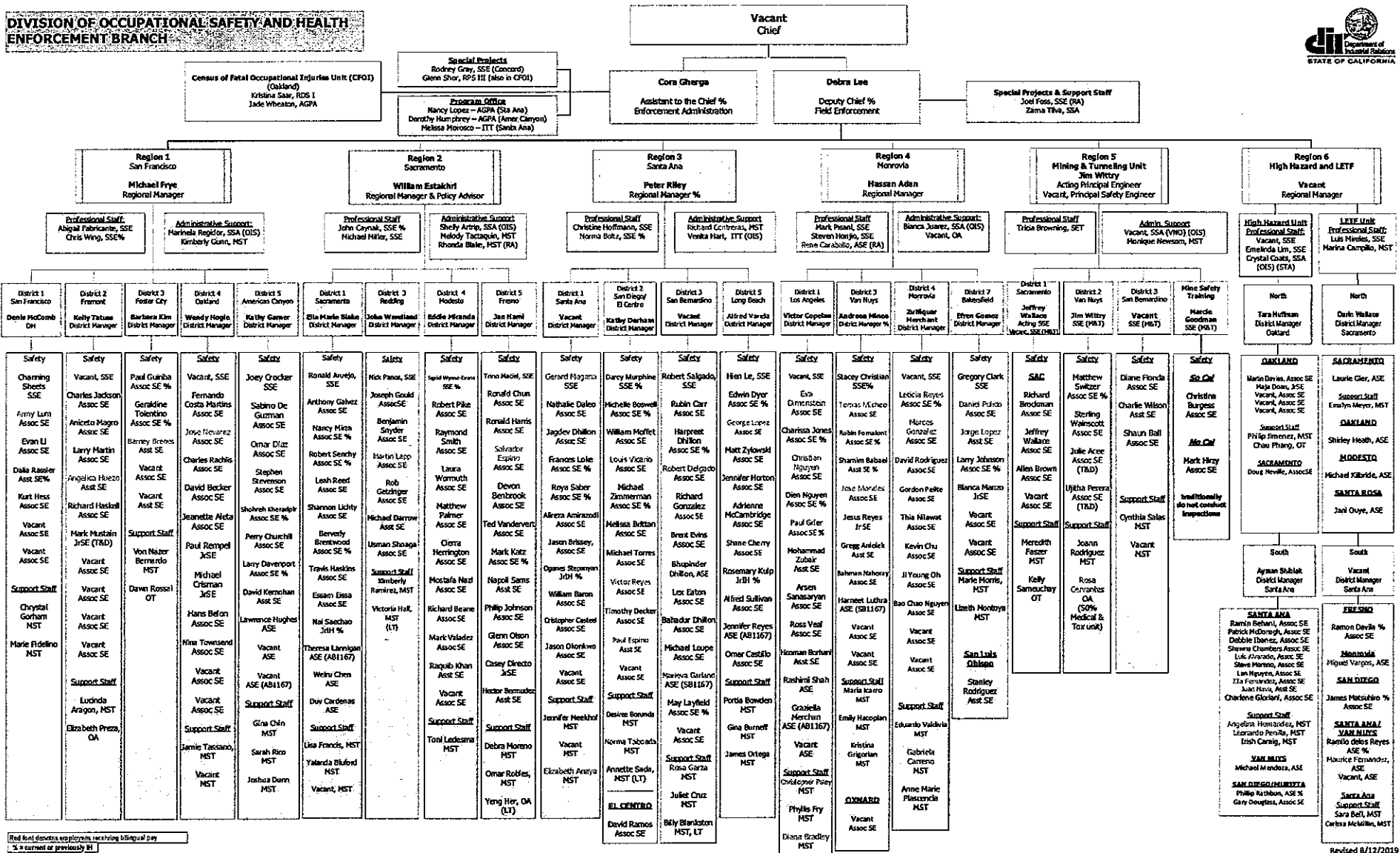
**Division of Occupational Safety and Health
 Communications, Research and Standards, Medical Unit, Asbestos
 and Carcinogen Unit, Crane Unit, and CALICO Laboratory**



Red font denotes employees receiving bilingual pay
 % = current or formerly IH

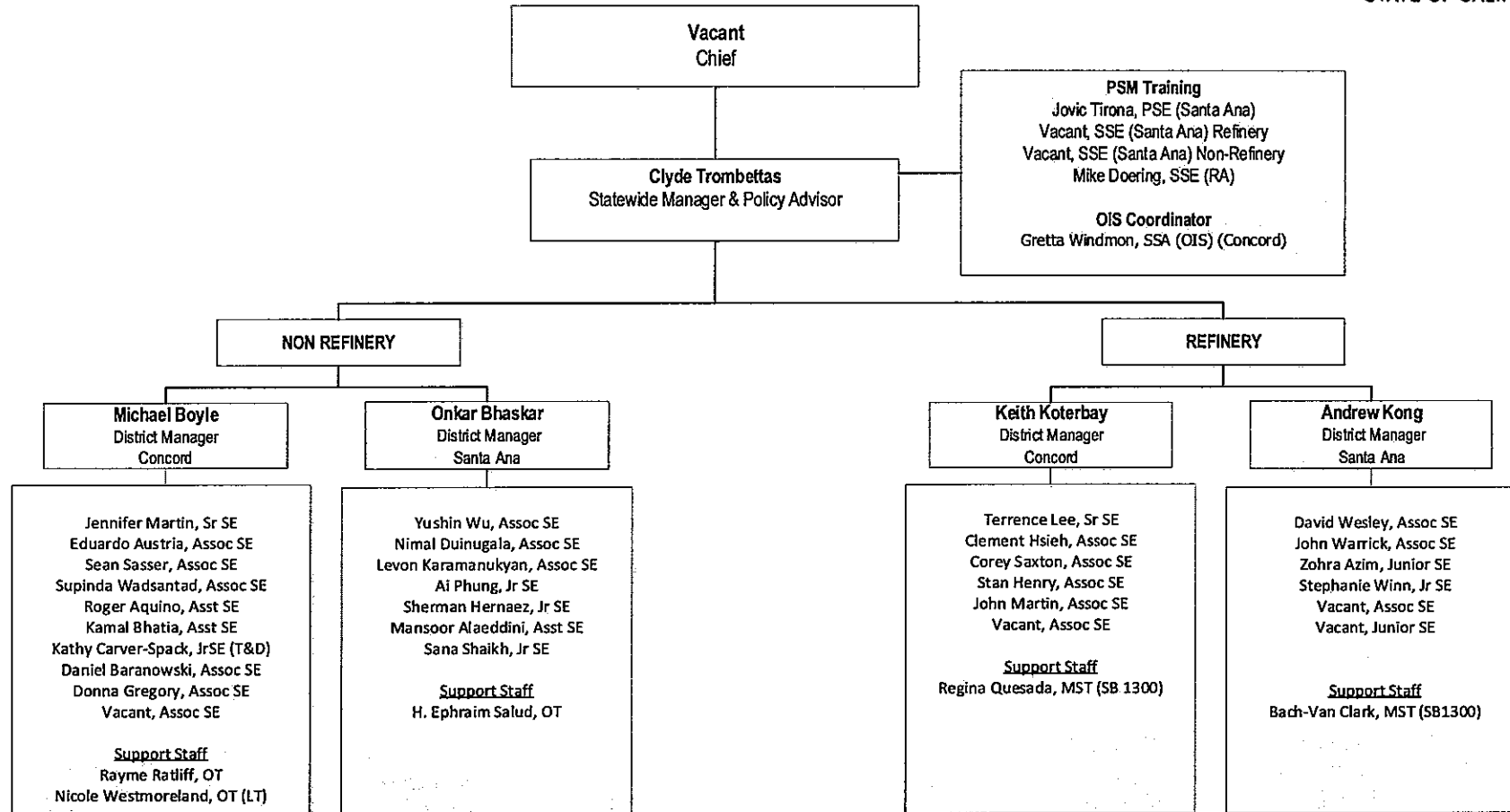
Revised 8/12/2019

**DIVISION OF OCCUPATIONAL SAFETY AND HEALTH
ENFORCEMENT BRANCH**



Red font denotes employees receiving bilingual pay
% = current or previously H

**DIVISION OF OCCUPATIONAL SAFETY AND HEALTH
ENFORCEMENT BRANCH - PROCESS SAFETY MANAGEMENT UNIT**



Red font denotes employees receiving bilingual pay

**Division of Occupational Safety and Health
Consultation Services Branch**

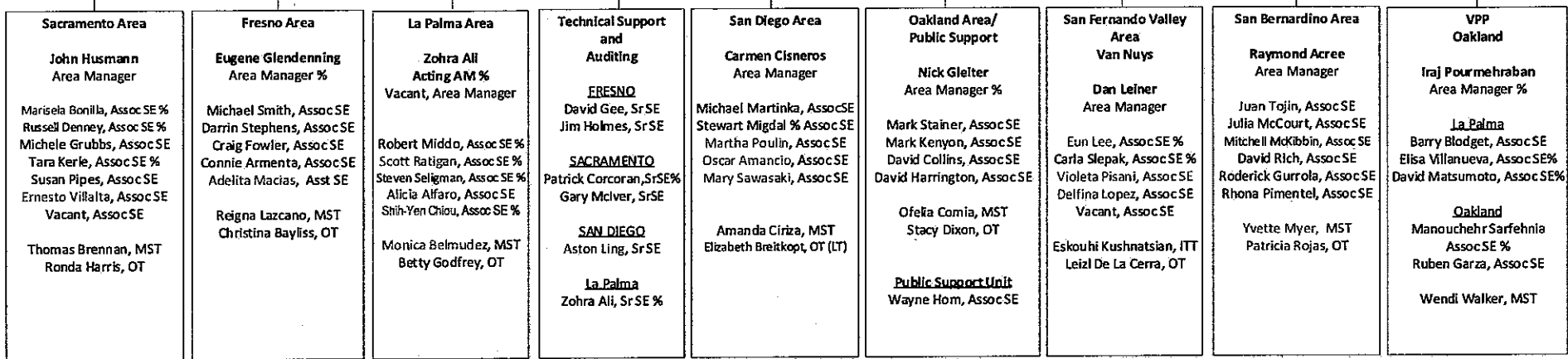


**Vacant
Chief**

Consultation Services Branch
Eugene Glendenning
Acting Program Manager %

On-Site Consultation Regional Office
Jim Lopes
Regional Manager %
Fresno

Sherry Heinz, AGPA
Fresno



Red font denotes employees receiving bilingual pay
% = current or formerly IH

Revised 8/1/2019

**Division of Occupational Safety and Health
Elevator Unit, Amusement Ride and Tramway Unit,
and Pressure Vessel Unit**

